



PRV.LTD
ENGINEERING
ONE ANSWER, MANY SOLUTIONS

email: enquiries@prv-engineering.co.uk

www.prv-engineering.co.uk

Tel: 01495 769697 Fax: 01495 769776

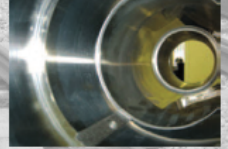
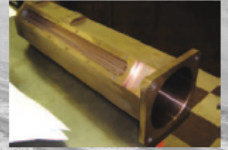


Services

- CNC Turning
- CNC Milling
- CAD/CAM
- Conventional Machining
- Deep Hole Drilling
- Fabrication
- Sheet Metal Work
- Presswork
- Prototyping
- Mechanical Installation
- Project Management
- Design & test
- Wet spray Painting
- Powder Coating
- Shot Blasting
- Toolmaking

Products

- Busbars
- Acoustic Covers
- Rail & Track Products
- Copper Braids
- Architectural Staircases & Railings
- OEM Spares
- Gauges
- Special Purpose Tooling
- Electrical Slewing
- Conveyor Systems
- Electrical Contacts
- Electrical Connections
- Material Handling Equipment
- Access Platforms & Ladders
- Complete Machined Castings
- Balustrades & Balconies



1.25 million pound expansion helps PRV Engineering re-enter the fabrication and construction markets

PRV Engineering has just completed a 1.25 million pound expansion and upgrade project at its site in New Inn, Pontypool, South Wales. With the addition of an 8000 sq ft building to its already 28000 sq ft facility and the addition of a 10 Tonne overhead crane capacity, PRV have set themselves up to re-enter the

fabrication and construction markets that it retracted from some years ago to concentrate on developing its internal engineering and fabrication services.

The project has also added to the company's portfolio 4 State of the art CNC machining Centres, namely, a Mazak Multi Tasking Integrex i400 machining centre, a Mazak VTC 800/30SR 5 axis 3 metre machining centre, a Mazak Turning Centre with Live tooling and the latest in Horizontal Machining centres, a DMG Mori Seiki NHX5000.

All machines come fully equipped with the latest Renishaw inspection



PRV.LTD
ENGINEERING
ONE ANSWER, MANY SOLUTIONS

plus probes and software, tool break detection and work piece orientation. Adding this equipment to the company's already impressive list of machines has meant that it can provide any customer with all manner of simple or complex machined component within its size range. And after securing contracts with companies such as AMG Mercedes and General Dynamics the company is looking to expand its already impressive customer portfolio into other similar customers.

Export is firmly in the sights of PRV engineering's CEO Simon Jones who has

already developed the company's activities to represent 23 per cent of its total output which in 2012 reached 4 Million.

The company currently employs around 51 personnel and has taken on 7 new employees in the past 12 months. Recruiting is still high on the company's agenda and it is always looking to add skilled

engineers to its workforce.

With the machining facility, fabrication, deep hole drilling, presswork, paint and powder coating services already provided by the company, the additions and expansion has reinforced PRV Engineering Ltd's position as a true one-stop-shop facility capable of providing a whole host of components and services from the smallest up to 10 tonne in single section weight.

FOR MORE INFORMATION

Tel: 01495 769697

enquiries@prv-engineering.co.uk